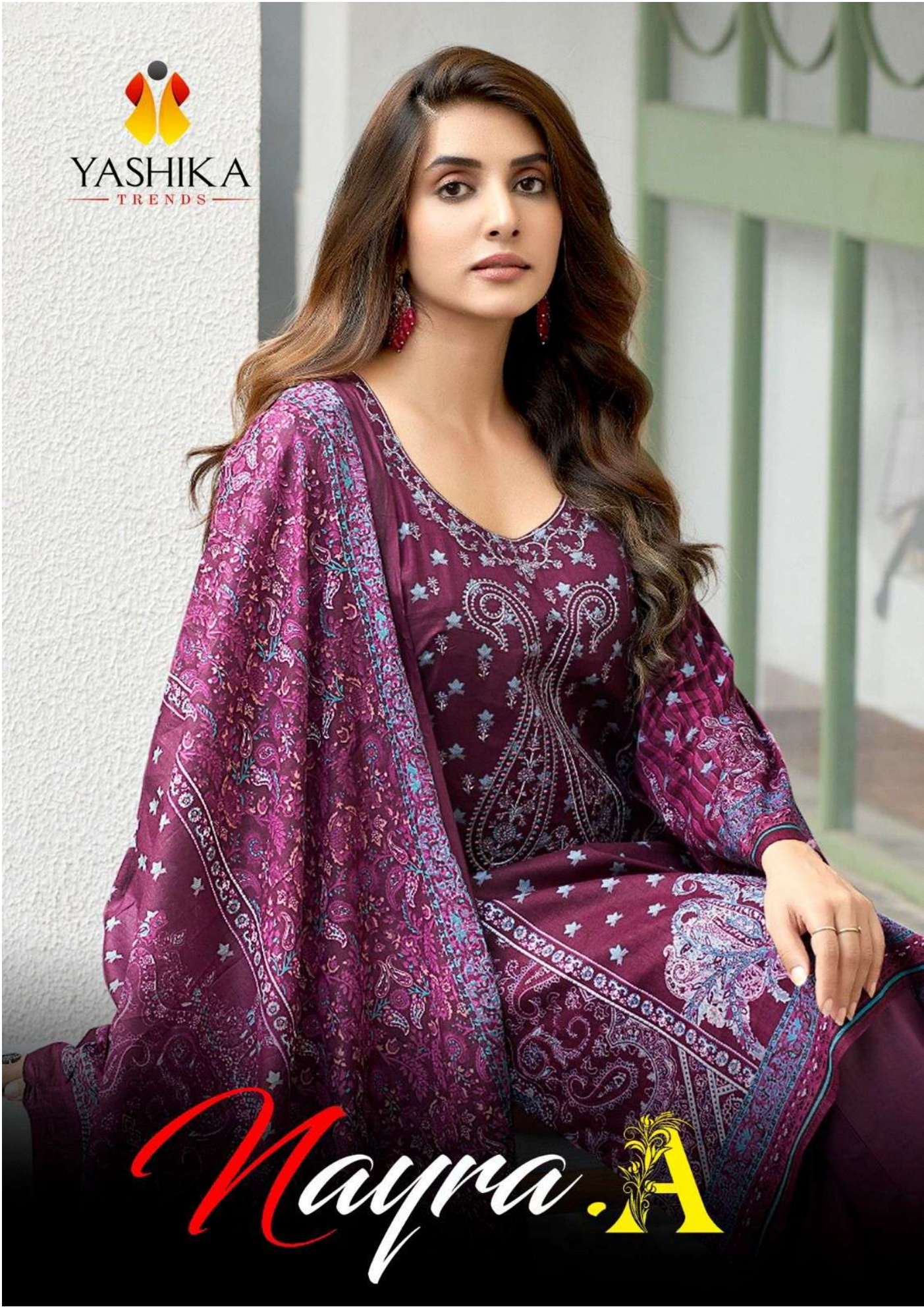




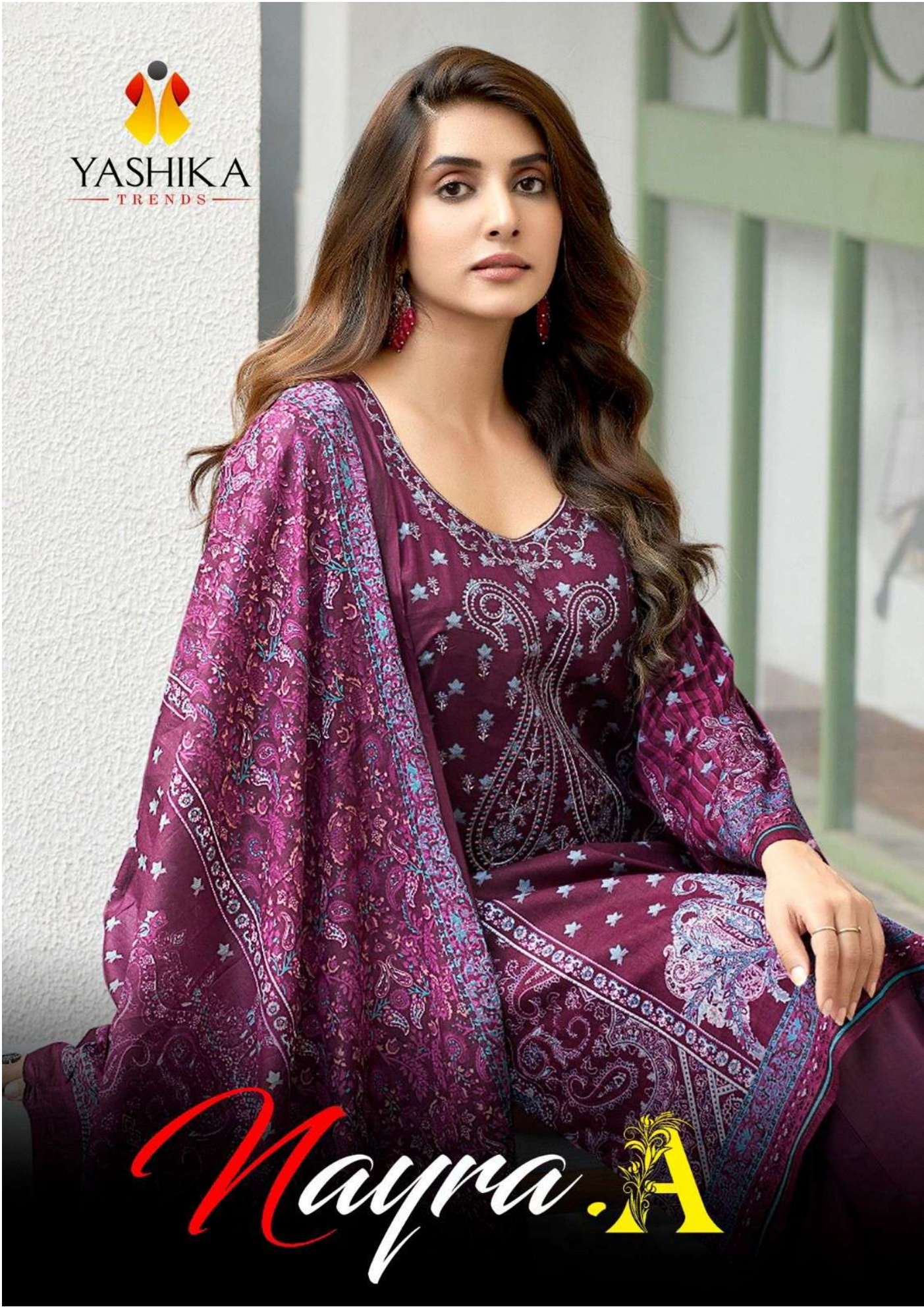
YASHIKA
TRENDS



Mayra.A



YASHIKA
TRENDS



Mayra.A



1001



1002



1003



1004



1005



1006



1007



1008



YASHIKA
TRENDS
SURAT







AS THEY SAY, STYLE MAKES AN INDIVIDUAL AND SALWAR KAMEEZ SUITS THIS ADJECTIVE TO THE HILT

D.NO-1008





YASHIKA
TRENDS





YASHIKA
TRENDS



D.NO-1006







THE SALWAAR KAMEEZ CONSISTS OF 3 ELEMENTS IN IT'S CREATION NAMELY THE KAMEEZ, SALWAR AND A DUPATTA

D.NO-1005





YASHIKA
TRENDS







YASHIKA
TRENDS



SALWAR KAMEEZ IS SPELLED AND PRONOUNCED DIFFERENTLY BY THE PEOPLE OF DIFFERENT COMMUNITIES, FOR EXAMPLE BY THE MUSLIM COMMUNITY IT IS CALLED SHALWAR QAMEEZ OR SHALWAR QAMIS, BY HINDU SALWAR KAMEEZ AND SOME CALL IT SALWAR CAMIS AND SOME PEOPLE CALL IT SALWAR SUITS.

D.NO-1004





YASHIKA
TRENDS



THE HOLD OF SALWAR IS FIRM BUT
ITS SPREAD IS LOOSE WHICH ALLOWS
FOR FLEXIBILITY. THE WOMEN FOLK
WEAR A LONG AND LOOSE TUNIC
KNOWN AS KAMEEZ OVER THE SAL-
WARS

D.NO-1002









YASHIKA
TRENDS



THERE ARE FEW THINGS, WHICH ARE A PART AND PARCEL OF INDIAN PSYCHE AND WHOSE REACH SPANS THE WHOLE OF THE COUNTRY PLUS THE VAST INDIAN DIASPORA ABROAD

D.NO-1001





SALWAR IS A PAJAMA LIKE TROUSERS, WHICH IS DRAWN IN A TIGHT MANNER AT THE WAIST AND THE ANKLES

D.NO-1007







YASHIKA
TRENDS



WITH A FINE TRADITION AND A COLORFUL PAST, SALWAR KAMEEZ HAS BECOME A FABRIC, WHICH HAS BROUGHT ABOUT A TOUCH OF CLASS TO INDIAN WOMEN



D.NO-1003