

# ALEENA

VOL-1

आाawiya®



आाawiya®



2111



2112



2113



2114



2115

ALEENA  
VOL-1

आाawiya®



Aaawiya®



YOU

SHOULD ALWAYS FEEL PRETTY

2114

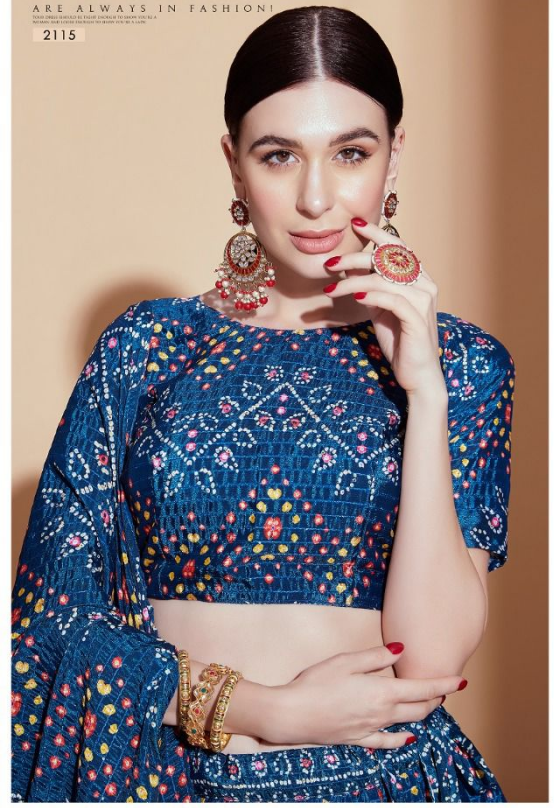
आaawiyā®



SMILES

ARE ALWAYS IN FASHION!

2115





WEIGHT - 1.5 KG

SKU	MAIN COLOR	LEHENGA FABRIC	BLOUSE FABRIC	DUPATTA FABRIC	DESCRIPTION
2111	PARPAL	CHINON CROCHET	CHINON CROCHET	CHINON CROCHET	DIGITAL PRINT & CORCHET WORK
2112	PEACH	CHINON CROCHET	CHINON CROCHET	CHINON CROCHET	DIGITAL PRINT & CORCHET WORK
2113	BLUE	CHINON CROCHET	CHINON CROCHET	CHINON CROCHET	DIGITAL PRINT & CORCHET WORK
2114	BLUE	CHINON CROCHET	CHINON CROCHET	CHINON CROCHET	DIGITAL PRINT & CORCHET WORK
2115	BLUE	CHINON CROCHET	CHINON CROCHET	CHINON CROCHET	DIGITAL PRINT & CORCHET WORK

- 1) LEHENGA & BLOUSE WORK:- DIGITAL PRINT & CORCHET
- 2) DUPATAA WORK:- DIGITAL PRINT & CORCHET WITH TASSELS
- 3) LEHENGA SEMI-STICH WITH ART SILK INNER & CAN-CAN WITH CANVAS
- 4) LEHENGA LENGTH 42" & WAIST 44"
- 5) LEHENGA FLAIR - 4 MTR & BLOUSE 1. MTR & DUPATTA LENGTH 2.3 MTR



SMILES

ARE ALWAYS IN FASHION!

2115

आaawiya®

YOU

SHOULD ALWAYS  
FEEL PRETTY

2114



आaawiya®



CLASSIC

NEVER GOES OUT OF STYLE

2111





# ALEENA

VOL-1

आाawiya®





GO

FORTH & BE FABULOUS!

DESIGNER: ANITA DOLY. PHOTO: ANITA DOLY. STYLING: ANITA DOLY. MAKEUP: ANITA DOLY. HAIR: ANITA DOLY. ACCESSORIES: ANITA DOLY. LEHENGA: ANITA DOLY. DUPATTA: ANITA DOLY. SHOES: ANITA DOLY. JEWELRY: ANITA DOLY. LOCATION: ANITA DOLY. DATE: ANITA DOLY. TIME: ANITA DOLY. WEATHER: ANITA DOLY. MOOD: ANITA DOLY. VIBE: ANITA DOLY. TAGS: ANITA DOLY. #ANITADOLY #FORTH&BEFABULOUS

2112



Aaawiya®

Aaawiya®



BE

YOUR OWN LABEL

2113



Aaawiya®



CLASSIC

NEVER GOES OUT OF STYLE

© 2011 Aaawiya. All rights reserved. This is a trademark of Aaawiya. All other trademarks are the property of their respective owners.

2111



GO

FORTH & BE FABULOUS!

2112

Aaawiyaa®





Aaawiya®

BE

YOUR OWN LABEL

2113



आाawiya®



2111



2112



2113



2114



2115

ALEENA  
VOL-1

आाawiya®



Aaawiya®



YOU

SHOULD ALWAYS FEEL PRETTY

2114



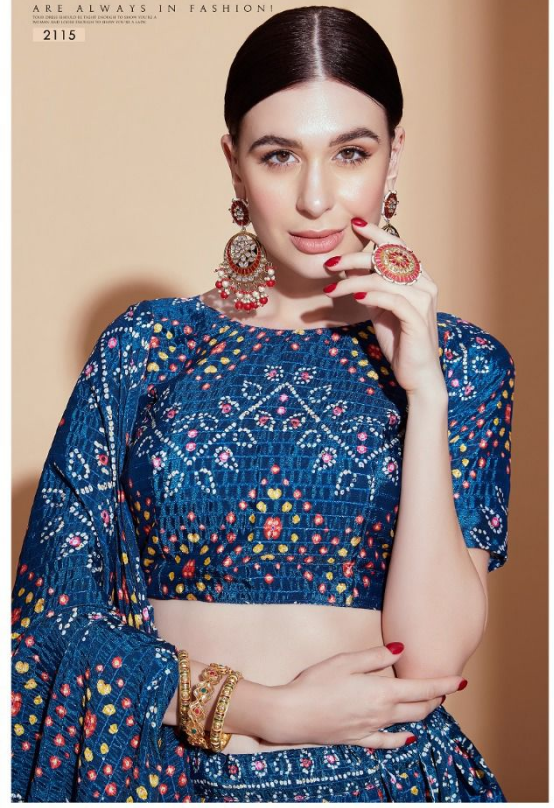
आaawiya®



SMILES

ARE ALWAYS IN FASHION!

2115





WEIGHT - 1.5 KG

SKU	MAIN COLOR	LEHENGA FABRIC	BLOUSE FABRIC	DUPATTA FABRIC	DESCRIPTION
2111	PARPAL	CHINON CROCHET	CHINON CROCHET	CHINON CROCHET	DIGITAL PRINT & CORCHET WORK
2112	PEACH	CHINON CROCHET	CHINON CROCHET	CHINON CROCHET	DIGITAL PRINT & CORCHET WORK
2113	BLUE	CHINON CROCHET	CHINON CROCHET	CHINON CROCHET	DIGITAL PRINT & CORCHET WORK
2114	BLUE	CHINON CROCHET	CHINON CROCHET	CHINON CROCHET	DIGITAL PRINT & CORCHET WORK
2115	BLUE	CHINON CROCHET	CHINON CROCHET	CHINON CROCHET	DIGITAL PRINT & CORCHET WORK

- 1) LEHENGA & BLOUSE WORK:- DIGITAL PRINT & CORCHET
- 2) DUPATAA WORK:- DIGITAL PRINT & CORCHET WITH TASSELS
- 3) LEHENGA SEMI-STICH WITH ART SILK INNER & CAN-CAN WITH CANVAS
- 4) LEHENGA LENGTH 42" & WAIST 44"
- 5) LEHENGA FLAIR - 4 MTR & BLOUSE 1. MTR & DUPATTA LENGTH 2.3 MTR



SMILES

ARE ALWAYS IN FASHION!

2115

आaawiya®

YOU

SHOULD ALWAYS  
FEEL PRETTY

2114



आaawiya®



CLASSIC

NEVER GOES OUT OF STYLE

© 2011 AAWIYA. ALL RIGHTS RESERVED. PHOTO: ANITA DIXIT. STYLING: ANITA DIXIT. MAKEUP: ANITA DIXIT. HAIR: ANITA DIXIT. ACCESSORIES: ANITA DIXIT.

2111



# ALEENA

VOL-1

आाawiya®





GO

FORTH & BE FABULOUS!

DESIGNER: ANITA DOLY. PHOTO: ANITA DOLY. STYLING: ANITA DOLY. MAKEUP: ANITA DOLY. HAIR: ANITA DOLY. ACCESSORIES: ANITA DOLY. LEHANGA: ANITA DOLY. DUPATTA: ANITA DOLY. SHOES: ANITA DOLY. JEWELRY: ANITA DOLY. BAG: ANITA DOLY. HAIR: ANITA DOLY. MAKEUP: ANITA DOLY. STYLING: ANITA DOLY. PHOTO: ANITA DOLY. DESIGNER: ANITA DOLY.

2112



Aaawiya®

Aaawiya®



BE

YOUR OWN LABEL

2113





आाawiya®



CLASSIC

NEVER GOES OUT OF STYLE

2111



GO

FORTH & BE FABULOUS!

2112

Aaawiya®





Aaawiya®

BE

YOUR OWN LABEL  
DESIGNED, MANUFACTURED, MARKETED, DISTRIBUTED BY  
A.A. AWAIYA & CO. PVT. LTD. 2113

