



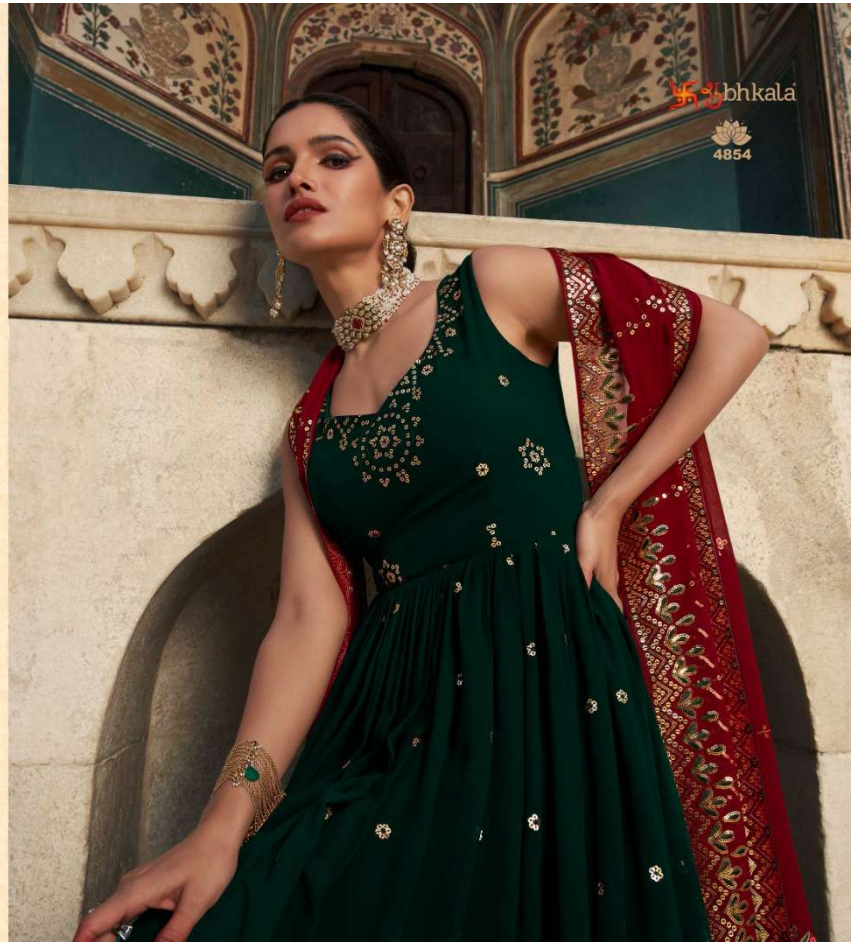


शुभकला

4852

शुभकला
4853











शुभकला



4855



शुभकला



4857



शुभकला



4856





4851



4852



4855



4856



4853



4854



4857


FLORY
 VOL-29

शुभकला



4857



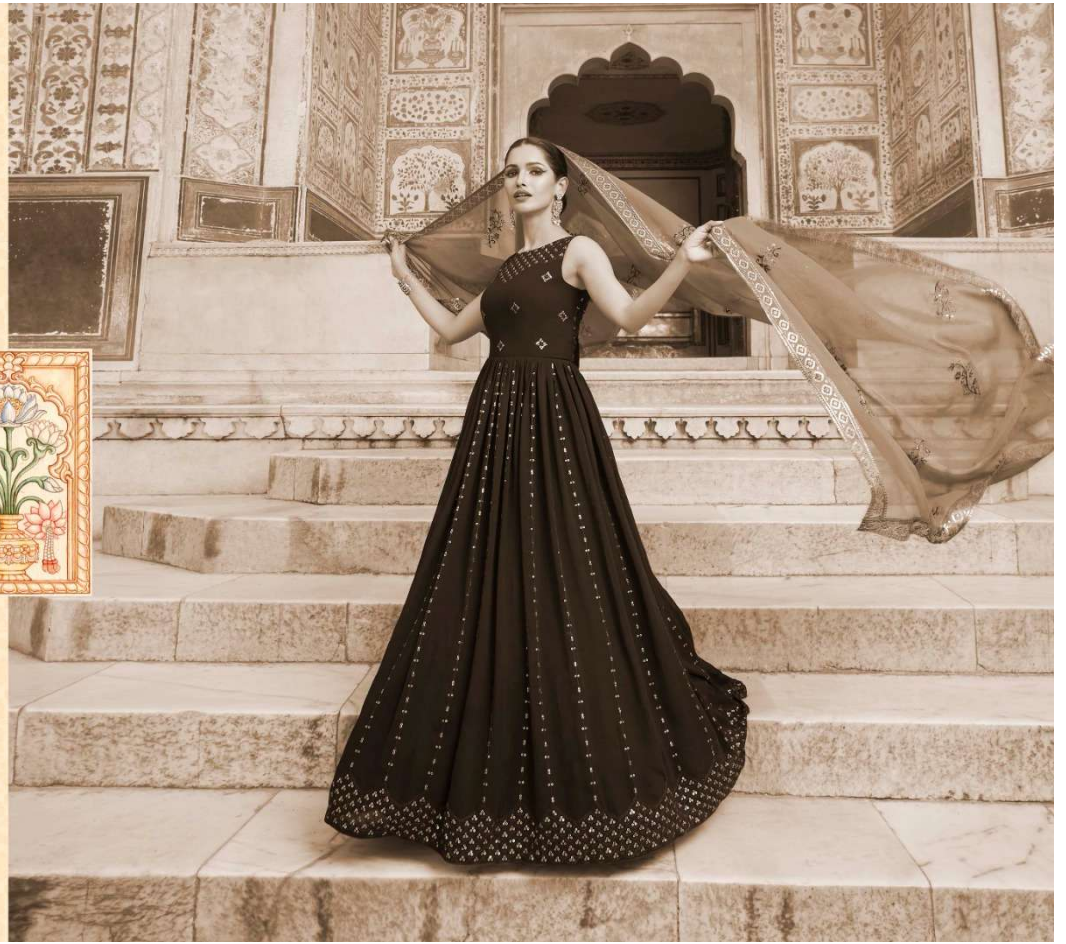
Design NO. (SKU)	Gown & Inner Color	Dupatta Color	Gown Fabric	Dupatta Fabric	Inner Fabric	Gown & Dupatta Work	SIZE (SEMI - STITCHED)	Top Length INCH	Inner Length MTR	Dupatta Length
4851	Purple	Mustard Yellow	Georgette	Shimmer	Silk Crepe	Thread And Sequince Embroidered Work	Semi Stitched (Customized from 34 to 46)	58	3	2.30 MTR
4852	Black	Mustard Yellow	Georgette	Shimmer	Silk Crepe	Thread And Sequince Embroidered Work	Semi Stitched (Customized from 34 to 46)	58	3	2.30 MTR
4853	Navy Blue	Maroon	Georgette	Georgette	Silk Crepe	Thread And Sequince Embroidered Work	Semi Stitched (Customized from 34 to 46)	58	3	2.30 MTR
4854	Green	Maroon	Georgette	Georgette	Silk Crepe	Thread And Sequince Embroidered Work	Semi Stitched (Customized from 34 to 46)	58	3	2.30 MTR
4855	Green	Green	Georgette	Shimmer	Silk Crepe	Thread And Sequince Embroidered Work	Semi Stitched (Customized from 34 to 46)	58	3	2.30 MTR
4856	Purple	Purple	Georgette	Shimmer	Silk Crepe	Thread And Sequince Embroidered Work	Semi Stitched (Customized from 34 to 46)	58	3	2.30 MTR
4857	Black	Black	Georgette	Shimmer	Silk Crepe	Thread And Sequince Embroidered Work	Semi Stitched (Customized from 34 to 46)	58	3	2.30 MTR

CAN-CAN NOT AVAILABLE. • FULL STITCHING AVAILABLE.

GOWN WEIGHT: 1 KG

THIS BOOK / CATALOGUE / LOGO / ARE PROTECTED UNDER COPYRIGHT ACT.
AN ILLEGAL/UNAUTHORIZED REPRINT, PUBLISHING, REPRODUCTION, DISTRIBUTION AND MODIFICATION OF ANY IMAGES, PHOTOGRAPHS AND PRODUCTCS, TOTALLY OR IN PART, FOR ANY PURPOSE, REASON OR CAUSE IS STRICTLY PROHIBITED AND PUNISHABLE UNDER LAW.

शुभकला















शुभकला



4851







Swastika bhkala



शुभकला



4852



